

RIALUX

ALUMINUM SIDING



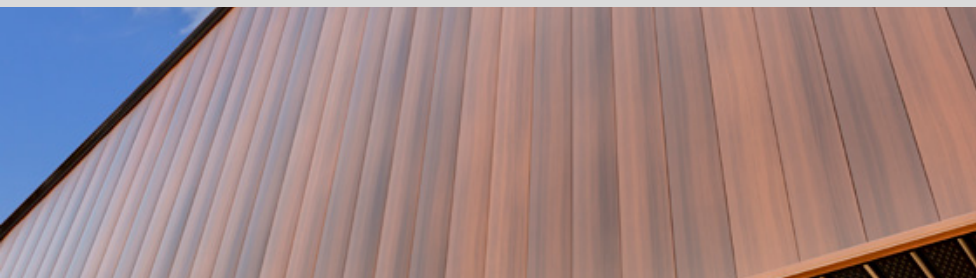
TECHNICAL DETAILS

Table of content

TIAGO	P_03
TIMBERLAND	P_05
BOLTON	P_07
BOSCO	P_09
TITAN	P_11
ACCESSORIES	P_13
STARTER STRIPS	P_13
DRIP CAP	P_13
WINDOW J-TRIM	P_14
INTERIOR CORNER	P_15
EXTERIOR CORNER	P_16
SOFFIT	P_17
ROLL	P_18
PERFORMANCE STANDARD	P_19-20

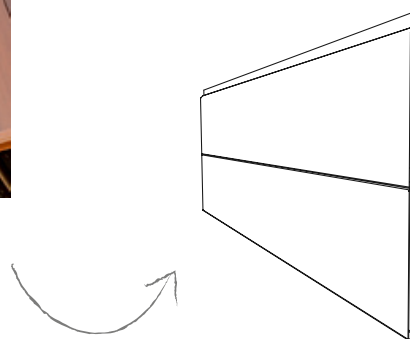


Also see our
RIALUX Installation guide



TIAGO

Collection



PRODUCT CHARACTERISTICS

- Flat profile

The Rialux siding panels of the **Tiago Collection** are entirely composed of aluminum. The Rialux siding panels stand out due to their light weight properties, rust resistance and installation ease. The panels have a surface that resembles natural wood, which will surely enhance the look of your project.

PRODUCT DETAILS	DIMENSIONS
Length	150 inches
Height covered	6 inches
Thickness - depth	0.43 inches
Weight (per panel)	3.33 lbs
Screw holes	3/4 in x 1/8 in (19mm x 3.2mm)
Screw hole intervals	3 1/4 in (82.5mm)
Caliber	27 thousandth
Panel	1 panel = 6.25 ft ²

PACKAGING

Quantity per box	18 panels of 150 in
Area covered per box	112.5 ft ²
Box dimension	152 x 7 3/4 x 4 7/8 inches
Box weight	60 lbs

NOTE

Please refer to the building codes for installation details.

MIXING THE SHADES

Rialux **Tiago Collection** panels are composed of many different shades in every color offered. Therefore, it is extremely important to mix the shades during installation to ensure an even distribution of the different shades throughout the surface. Make sure to validate that the results are satisfying every 3 or 4 rows installed.

INSTALLATION SURFACES

- On wood furring
(16 inches center to center)
- On metal furring
(16 inches center to center)

DIRECTIONS OF INSTALLATION

- Horizontal laying
- Vertical laying

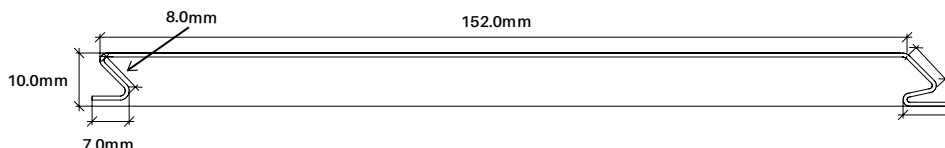
FIXING PROCEDURE

- Screw every 16 inches in the middle of each opening provided for this purpose. Use stainless steel screws.
- Overlap the profile panels of 12.5 lin. ft with the notches on the installation surface.

CONTINUED ON PAGE 4

TIAGO

Collection



SCREWS

Screw in the middle of each opening provided for this purpose and in a moderate way. It is important not to use pressure towards the bottom or the top while screwing. Make sure that the result is satisfying every 3 or 4 rows installed. To ensure installation quality, remove the protective film from the coating throughout and make corrections if necessary.

ASSEMBLY

Joining Rialux aluminum siding panels along their width: Install using the Clip-Secur system, which covers and protects the screw zones.

Joining Rialux aluminum siding panels along their length: Overlap the notched ends at the extremities of the Rialux aluminum siding panels.

MOULDINGS AND ACCESSORIES

The aluminum siding manufacturer Rialux also offers Starter strip, Drip cap, J-Trim, as well as interior and exterior corners.

Carefully install the starter strip as a hidden fastener at the base of the walls behind the Rialux profiles. A drip cap is required to divert water around windows and doors.

COLORS



BARK BIRCH EBONY SIENNA GREY OAK



DRIFTWOOD DARK WALNUT NORDIC CEDAR MATTE BLACK BALSA*

*THE BALSA COLOR IS AVAILABLE WHILE SUPPLIES LAST.

MATERIAL VERIFICATION

The contents of every box must be inspected upon reception. All material installed constitutes acceptance of product.

HANDLING BOXES

Always lift from both ends and keep the box straight at all times. Do not lift from the middle to avoid damaging or warping the product.



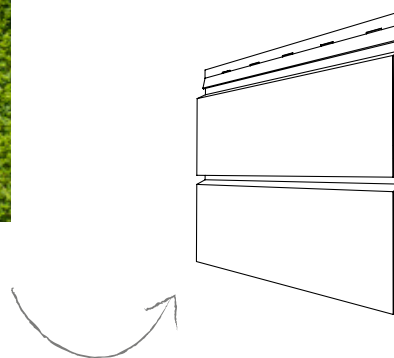
FIRE RESISTANCE

The aluminum siding panels of the Rialux **Tiago Collection** are classified as a zero flammability hazard, according to the NFPA Rating Explanation Guide.



TIMBERLAND

Collection



PRODUCT CHARACTERISTICS

- Profile with channel

The Rialux siding panels of the **Timberland Collection** are entirely composed of aluminum. The Rialux siding panels stand out due to their light weight properties, rust resistance and installation ease. The panels have a surface that resembles natural wood, which will surely enhance the look of your project.

PRODUCT DETAILS	DIMENSIONS
Length	150 inches
Height covered	5.45 inches
Thickness - depth	0.45 inches
Weight (per panel)	3.30 lbs
Screw holes	3/4 in x 1/8 in (19mm x 3.2mm)
Screw hole intervals	3 1/4 in (82.5mm)
Caliber	27 thousandth
Panel	1 panel = 5.68 ft ²

PACKAGING

Quantity per box	20 panels of 150 in
Area covered per box	113.6 ft ²
Box dimension	152 x 7 3/4 x 4 7/8 inches
Box weight	66 lbs

NOTE

Please refer to the building codes for installation details.

MIXING THE SHADES

Rialux **Timberland Collection** panels are composed of many different shades in every color offered. Therefore, it is extremely important to mix the shades during installation to ensure an even distribution of the different shades throughout the surface. Make sure to validate that the results are satisfying every 3 or 4 rows installed.

INSTALLATION SURFACES

- On wood furring
(16 inches center to center)
- On metal furring
(16 inches center to center)

DIRECTIONS OF INSTALLATION

- Horizontal laying
- Vertical laying

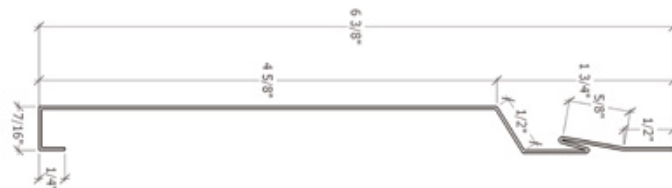
FIXING PROCEDURE

- Screw every 16 inches in the middle of each opening provided for this purpose. Use stainless steel screws.
- Overlap the profile panels of 12.5 lin. ft with the notches on the installation surface.

CONTINUED ON PAGE 6

TIMBERLAND

Collection



SCREWS

Screw in the middle of each opening provided for this purpose and in a moderate way. It is important not to use pressure towards the bottom or the top while screwing. Make sure that the result is satisfying every 3 or 4 rows installed. To ensure installation quality, remove the protective film from the coating throughout and make corrections if necessary.

ASSEMBLY

Joining Rialux aluminum siding panels along their width: Install using the Clip-Secur system, which covers and protects the screw zones.

Joining Rialux aluminum siding panels along their length: Overlap the notched ends at the extremities of the Rialux aluminum siding panels.

MOULDINGS AND ACCESSORIES

The aluminum siding manufacturer Rialux also offers Starter strip, Drip cap, J-Trim, as well as interior and exterior corners.

Carefully install the starter strip as a hidden fastener at the base of the walls behind the Rialux profiles. A drip cap is required to divert water around windows and doors.

COLORS



BARK

BIRCH

EBONY

SIENNA

GREY OAK

DRIFTWOOD

DARK WALNUT

NORDIC CEDAR

MATTE BLACK

BALSA*

*THE BALSA COLOR IS AVAILABLE WHILE SUPPLIES LAST.

MATERIAL VERIFICATION

The contents of every box must be inspected upon reception. All material installed constitutes acceptance of product.

HANDLING BOXES

Always lift from both ends and keep the box straight at all times. Do not lift from the middle to avoid damaging or warping the product.



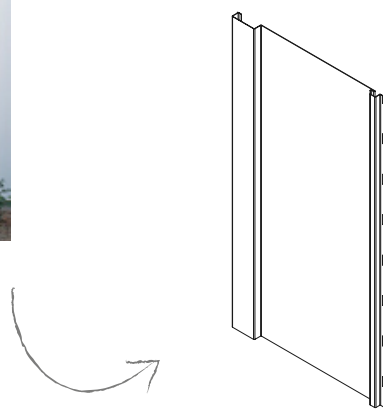
FIRE RESISTANCE

The aluminum siding panels of the Rialux **Timberland Collection** are classified as a zero flammability hazard, according to the NFPA Rating Rating Explanation Guide.



BOLTON

Collection



PRODUCT CHARACTERISTICS

- Board & Batten profile

The Rialux siding panels of the **Bolton Collection** are entirely composed of aluminum. The Rialux siding panels stand out due to their light weight properties, rust resistance and installation ease. The panels have a surface that resembles natural wood, which will surely enhance the look of your project.

PRODUCT DETAILS	DIMENSIONS
Length	150 inches
Height covered	12 inches
Thickness - depth	1.063 inches
Weight (per panel)	6.5 lbs
Screw holes	0.75 in x 0.1875 in (19mm x 4.8mm)
Screw hole intervals	1.5 in (38.1mm)
Caliber	27 thousandth
Panel	1 panel = 12.5 ft ²

PACKAGING

Quantity per box	10 panels of 150 in
Area covered per box	125 ft ²
Box dimension	152 x 16 x 4 1/8 inches
Box weight	65 lbs

NOTE

Please refer to the building codes for installation details.

MIXING THE SHADES

Rialux **Bolton Collection** panels are composed of many different shades in every color offered. Therefore, it is extremely important to mix the shades during installation to ensure an even distribution of the different shades throughout the surface. Make sure to validate that the results are satisfying every 3 or 4 rows installed.

INSTALLATION SURFACES

- On wood furring
(16 inches center to center)
- On metal furring
(16 inches center to center)

DIRECTIONS OF INSTALLATION

- Vertical laying

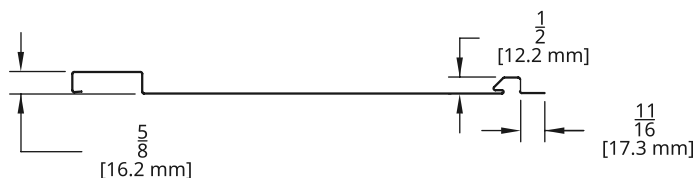
FIXING PROCEDURE

- Screw every 16 inches in the middle of each opening provided for this purpose. Use stainless steel screws.

CONTINUED ON PAGE 8

BOLTON

Collection



SCREWS

Screw in the middle of each opening provided for this purpose and in a moderate way. It is important not to use pressure towards the bottom or the top while screwing. Make sure that the result is satisfying every 3 or 4 rows installed. To ensure installation quality, remove the protective film from the coating throughout and make corrections if necessary.

ASSEMBLY

Use a transition molding to overlap the panels.

MATERIAL VERIFICATION

The contents of every box must be inspected upon reception. All material installed constitutes acceptance of product.

MOULDINGS AND ACCESSORIES

The aluminum siding manufacturer Rialux also offers Starter strip, Drip cap, J-Trim, as well as interior and exterior corners.

Carefully install the starter strip as a hidden fastener at the base of the walls behind the Rialux profiles. A drip cap is required to divert water around windows and doors.

HANDLING BOXES

Always lift from both ends and keep the box straight at all times. Do not lift from the middle to avoid damaging or warping the product.



COLORS



BARK

BIRCH

EBONY

SIENNA

GREY OAK



DRIFTWOOD

DARK WALNUT

NORDIC CEDAR

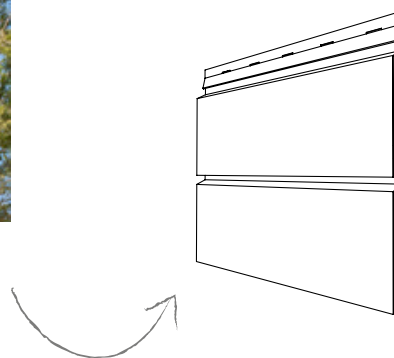
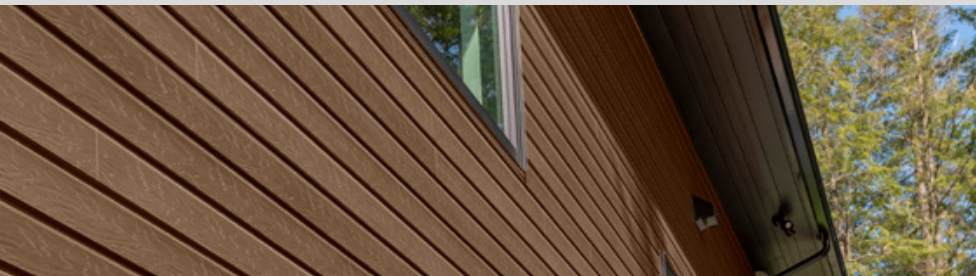
MATTE BLACK

BALSA*

FIRE RESISTANCE

The aluminum siding panels of the Rialux **Bolton Collection** are classified as a zero flammability hazard, according to the NFPA Rating Explanation Guide.

*THE BALSA COLOR IS AVAILABLE WHILE SUPPLIES LAST.



BOSCO

Collection

PRODUCT CHARACTERISTICS

- Textured profile with channel

The siding panels from Rialux's **Bosco Collection** are made entirely of aluminum. Rialux aluminum siding panels stand out for their ease of installation, extremely lightweight design, and rust resistance. The product's texture mimics natural wood, giving your project a striking and elegant look.

PRODUCT DETAILS	DIMENSIONS
Length	150 inches
Height covered	5.45 inches
Thickness - depth	0.45 inches
Weight (per panel)	2 lbs
Screw holes	3/4 in x 1/8 in (19mm x 3.2mm)
Screw hole intervals	3 1/4 in (82.5mm)
Caliber	21 thousandth
Panel	1 panel = 5.68 ft ²

PACKAGING	
Quantity per box	20 panels of 150 in
Area covered per box	113.6 ft ²
Box dimension	152 x 7 3/4 x 4 7/8 inches
Box weight	55 lbs

NOTE

Please refer to the building codes for installation details.

INSTALLATION SURFACES

- On wood furring
(16 inches center to center)
- On metal furring
(16 inches center to center)

DIRECTIONS OF INSTALLATION

- Horizontal laying
- Vertical laying

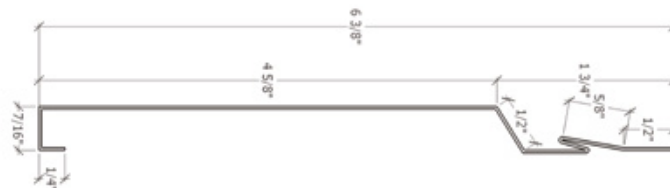
FIXING PROCEDURE

- Screw every 16 inches in the middle of each opening provided for this purpose. Use stainless steel screws.
- Overlap the profile panels of 12.5 lin. ft with the notches on the installation surface.

CONTINUED ON PAGE 10

BOSCO

Collection



SCREWS

Screw in the middle of each opening provided for this purpose and in a moderate way. It is important not to use pressure towards the bottom or the top while screwing. Make sure that the result is satisfying every 3 or 4 rows installed. To ensure installation quality, remove the protective film from the coating throughout and make corrections if necessary.

ASSEMBLY

Joining Rialux aluminum siding panels along their width: Install using the Clip-Secur system, which covers and protects the screw zones.

Joining Rialux aluminum siding panels along their length: Overlap the notched ends at the extremities of the Rialux aluminum siding panels.

MOULDINGS AND ACCESSORIES

The aluminum siding manufacturer Rialux also offers Starter strip, Drip cap, J-Trim, as well as interior and exterior corners.

Carefully install the starter strip as a hidden fastener at the base of the walls behind the Rialux profiles. A drip cap is required to divert water around windows and doors.

COLORS



ALPINE WHITE

TERRA BROWN

PEBBLE GREY

ABSOLUTE
BLACK

DUNE BEIGE

MATERIAL VERIFICATION

The contents of every box must be inspected upon reception. All material installed constitutes acceptance of product.

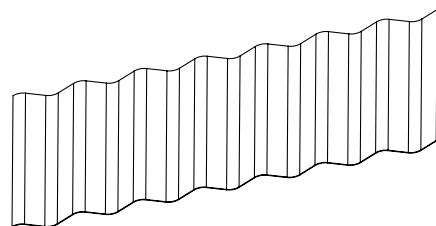
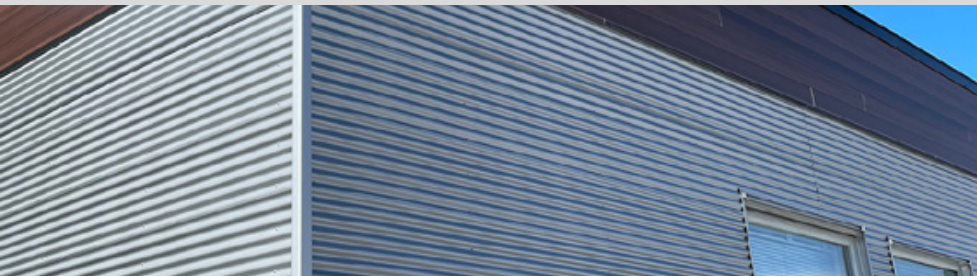
HANDLING BOXES

Always lift from both ends and keep the box straight at all times. Do not lift from the middle to avoid damaging or warping the product.



FIRE RESISTANCE

The aluminum siding panels of the Rialux **Bosco Collection** are classified as a zero flammability hazard, according to the NFPA Rating Rating Explanation Guide.



TITAN

Collection

PRODUCT CHARACTERISTICS

- Corrugated profile

The Rialux siding panels of the **Titan Collection** are entirely composed of aluminum. The Rialux siding panels stand out due to their light weight properties, rust resistance and installation ease.

PRODUCT DETAILS	DIMENSIONS
Length	150 inches
Height covered	12 inches
Thickness - depth	0.40 inches
Weight (per panel)	6.5 lbs
Caliber	21 thousandth
Panel	1 panel = 12.5 ft ²

INSTALLATION SURFACES

- On wood furring
(16 inches center to center)
- On metal furring
(16 inches center to center)

DIRECTIONS OF INSTALLATION

- Horizontal laying
- Vertical laying

PACKAGING

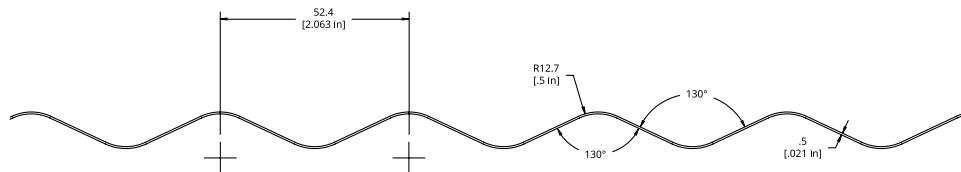
Quantity per box	Sold individually
Area covered per panel	12.5 ft ²

NOTE

Please refer to the building codes for installation details.

TITAN

Collection



SCREWS

Screw in the middle of each opening provided for this purpose and in a moderate way. Make sure that the result is satisfying every 3 or 4 rows installed.

ASSEMBLY

Overlap the panels one over the other, then screw them in place.

MATERIAL VERIFICATION

The contents of every box must be inspected upon reception. All material installed constitutes acceptance of product.

MOULDINGS AND ACCESSORIES

The aluminum siding manufacturer Rialux also offers Drip cap, J-Trim, as well as interior and exterior corners.

A drip cap is required to divert water around windows and doors.

HANDLING BOXES

Always lift from both ends and keep the box straight at all times. Do not lift from the middle to avoid damaging or warping the product.



COLORS

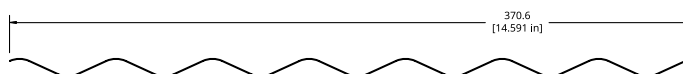


MATTE BLACK MATTE SILVER

*THIS PROFILE IS ALSO AVAILABLE IN BOSCO COLORS.

FIRE RESISTANCE

The aluminum siding panels of the Rialux **Titan Collection** are classified as a zero flammability hazard, according to the NFPA Rating Rating Explanation Guide.



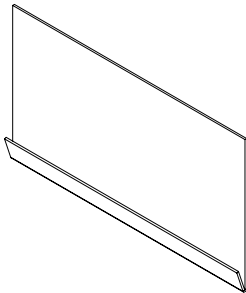
SCALE 1:2

ACCESSORIES

Collection

Starter strips

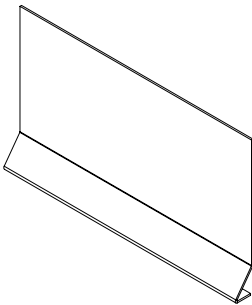
TIAGO



PRODUCT DETAILS	DIMENSIONS
Length	120 inches
Weight (per panel)	1.25 lbs
Caliber	27 thousandth

*AVAILABLE IN BLACK ONLY

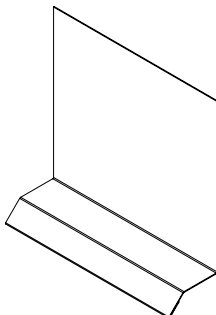
TIMBERLAND



PRODUCT DETAILS	DIMENSIONS
Length	120 inches
Weight (per panel)	1.25 lbs
Caliber	27 thousandth

*AVAILABLE IN BLACK ONLY

BOLTON (ALSO THE DRIP CAP)



PRODUCT DETAILS	DIMENSIONS
Length	120 inches
Weight (per panel)	1.5 lbs
Caliber	27 thousandth

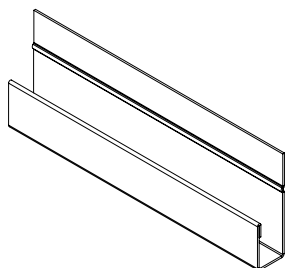
*AVAILABLE IN ALL COLORS

ACCESSORIES

Collection

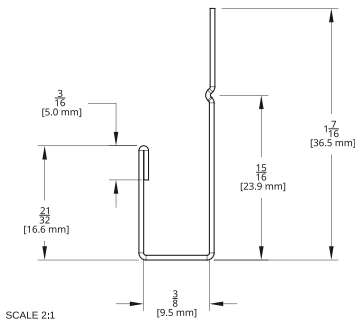
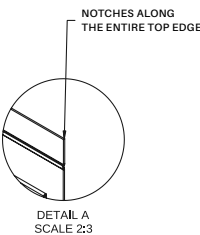
J-Trim - Windows

TIAGO - TIMBERLAND

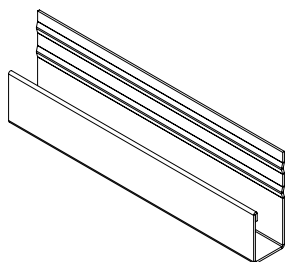


PRODUCT DETAILS	DIMENSIONS
Length	120 inches
Weight (per panel)	1 lbs
Caliber	27 thousandth

*AVAILABLE IN ALL COLORS

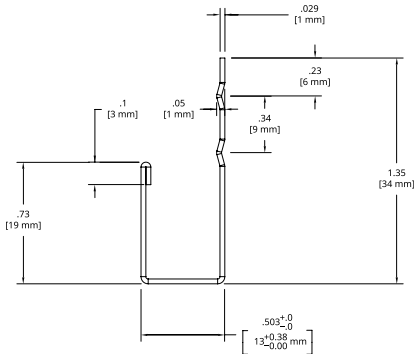


BOLTON



PRODUCT DETAILS	DIMENSIONS
Length	120 inches
Weight (per panel)	1.75 lbs
Caliber	27 thousandth

*AVAILABLE IN ALL COLORS

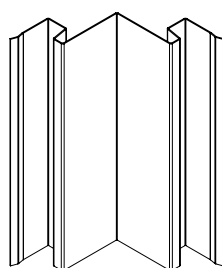


ACCESSORIES

Collection

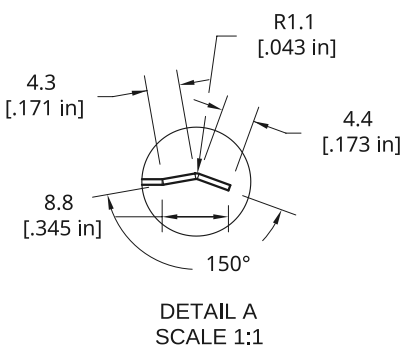
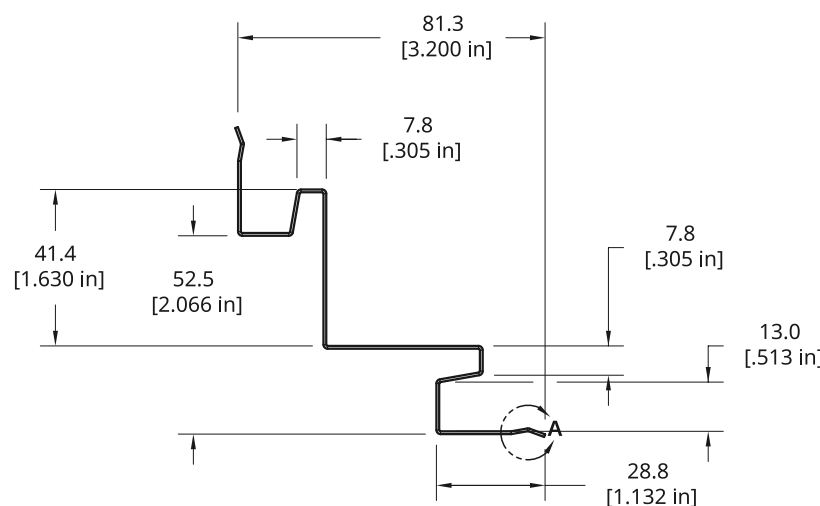
Interior corner

TIAGO - TIMBERLAND - BOLTON



PRODUCT DETAILS	DIMENSIONS
Length	120 inches
Weight (per panel)	2.65 lbs
Caliber	27 thousandth

*AVAILABLE IN ALL COLORS

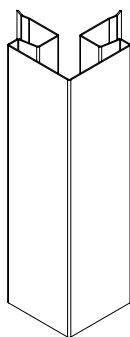


ACCESSORIES

Collection

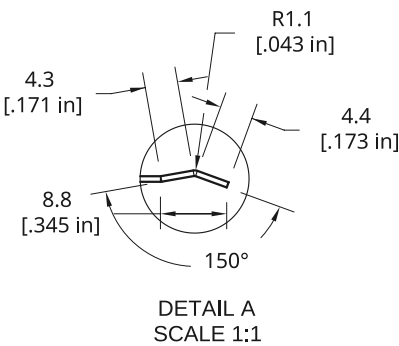
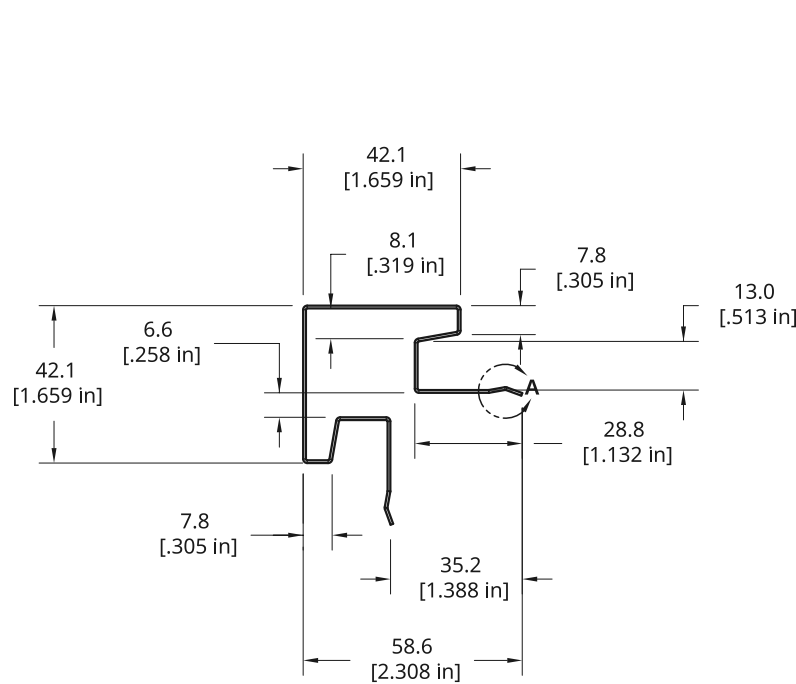
Exterior corner

TIAGO - TIMBERLAND - BOLTON



PRODUCT DETAILS	DIMENSIONS
Length	120 inches
Weight (per panel)	2.60 lbs
Caliber	27 thousandth

*AVAILABLE IN ALL COLORS



ACCESSORIES

Collection

Soffit

TIAGO



PRODUCT DETAILS	DIMENSIONS
Length	150 inches
Weight (per panel)	3.33 lbs
Caliber	27 thousandth

*THE SAME DIMENSIONS AS THE TIAGO PANELS. AVAILABLE IN TIAGO COLORS.

TIMBERLAND

PRODUCT DETAILS	DIMENSIONS
Length	150 inches
Weight (per panel)	3.30 lbs
Caliber	27 thousandth

*THE SAME DIMENSIONS AS THE TIAGO PANELS. AVAILABLE IN TIMBERLAND COLORS.

14"

PRODUCT DETAILS	DIMENSIONS
Length	150 inches
Weight (per panel)	3.30 lbs
Caliber	21 thousandth

*AVAILABLE IN BOSCO COLORS + MATTE SILVER.

ACCESSORIES

Collection

Roll 16 inches x 100 ft

FOR ALL COLLECTIONS



PRODUCT DETAILS	DIMENSIONS
Length	100 ft
Weight (per roll)	54 lbs
Caliber	27 thousandth

Printed sheet with Replikote fluoropolymer pattern

Performance standard

SCOPE

This technical data sheet covers hot-dip galvanized steel sheets and pre-painted aluminum sheets with printed patterns for use in building product applications. MSC Replikote™ fluoropolymer printed pre-finished systems are designed for surfaces installed horizontally (with an incline between 15° and 85°, and no more than 5° from the vertical) and for environments with moderate atmospheric exposure. They are not suitable for use in aggressive environments.

SUBSTRATE

The substrate provided before painting will be a continuous sheet of hot-dip galvanized steel (ASTM A653/A653M standard), a continuous Galvalume sheet (ASTM A792/A792M standard), or a continuous sheet of aluminum (manufactured according to the standards of the Aluminum Association).

PAINT PROPERTIES

1. Film Thickness

- The minimum dry film thickness of the visible side of the sheet will be 1.0 mil (ASTM D5796 standard). If needed, thicker films can be applied to match a specific color.
- The non-visible side (reverse) will have a dry film thickness with a nominal value of 0.20 mil, or any other thickness as agreed upon with the client.

2. Curing of the Film

The film, as supplied on the product, must withstand one hundred (100) double rub tests using a cloth saturated with methyl ethyl ketone, in accordance with the ASTM D5402 standard.

3. Formability or Fabrication Resistance

- When testing a representative sample at 70°F ± 5°F (20°C ± 2°C) using Scotch Tape No. 600 or equivalent, the paint system must show no signs of adhesion loss when subjected to a 180° bend with a 3T radius (ASTM D4145 standard). This requirement applies only to hot-dip galvanized or Galvalume substrates of a maximum thickness of 0.027 inches, as well as to aluminum grades and thicknesses that can undergo bending without cracking, following a 3T radius.

4. Gloss

- The gloss, measured using a 60° gloss meter in accordance with ASTM D523, must display 0-10 units for standard coatings or any other value agreed upon between the client and MSC. This requirement does not apply to textured systems, as it is impossible to obtain an accurate gloss measurement on such surfaces.

5. Outdoor Exposure (Weathering Alterations)

- The system will successfully meet the following weathering criteria in Canada and the continental United States, provided the product has not been exposed to stagnant water or an aggressive environment (including saltwater, animal waste, and any chemicals not typically found in the atmosphere), and that there are no signs of compromise to the film integrity due to improper storage, installation, or maintenance gaps.



CONTINUED ON PAGE 15

Printed sheet with Replikote fluoropolymer pattern

Performance standard

PAINT PROPERTIES (FOLLOWING)

6.1. Film Integrity

- During the first forty (40) years of outdoor exposure for applications requiring normal profiling, the film must show no signs of cracking, crazing, peeling, splitting, spotting, or loss of adhesion during routine visual inspection. Microcracks, which may occur during the manufacturing of parts following proper techniques, as well as failures due to substrate corrosion, are not covered by this standard.

6.2. Chalking

- During the first thirty (30) years of exposure, the chalking must not exceed number 8 (ASTM D4214 standard).

6.3. Discoloration

- It is impossible to measure color on a printed surface using instruments due to the natural variations of the pattern. The appearance of the print will remain intact and recognizable during the first twenty (20) years of exposure, and the discoloration will be uniform. Panels or sections of panels subjected to highly uneven sun exposure due to installation conditions will be excluded from this requirement in those areas of uneven exposure.

MATCHING

It is commercially impossible for each batch of pre-finished steel to have an identical color. Since visual tolerances may lead to some subjectivity in color matching, every effort should be made to sort the product by batches for final use by the client.

NOTES

The technical data and other information presented in this document are based on research results and information currently available. As further research and development become available, changes to this document may be necessary. Continuous Colour Coat Limited reserves the right to change or modify its products at any time, regardless of whether modifications are required to the data and information presented in this document.

Continuous Colour Coat Limited disclaims any responsibility for the use of the information disclosed in this document. The reader must ensure the applicability or relevance of any MSC product. Continuous Colour Coat Limited does not provide any guarantees regarding the relevance of the opinions, data, or information contained herein. The final responsibility for selecting a product lies with the buyer.

Continuous Colour Coat Limited also disclaims any responsibility arising from the eventual use of any of its products by a buyer, and its liability is limited to the provisions outlined in the sales conditions set forth in its quotations and order acknowledgment forms. Furthermore, claims for damages will not be accepted for causes including but not limited to: natural disasters, radiation, exposure of cut edges, substrate corrosion, falling objects, explosions, fire, riots, civil unrest, acts of war, or other external forces. Aggressive environments not covered by this standard include, but are not limited to, exposure to ashes, cement dust, carbon black, animal waste, poor air circulation at condensation sources, copper, lead, nickel, or silver fallout from mining or refining processes, salts or other natural or artificial chemicals, and any location within 1,000 meters of saltwater. All claims will be subject to prior investigation to determine their validity.